

BOARD OF DIRECTORS:

JIM JOHNSON, President
ROGER FRANCIS, Vice President
TRICIA GARDELLA, Sec./Treas.
BOB OZBIRN
GARY DAMBACHER
PETE KERNS
BILL POLLEY
TRACY RUSSELL
CLARK SEGERSTROM

GREG APPLLEGATE
Executive Director

LIN FREER
Program Manager

CATHI NIES
*Finance & Administration
Manager*

Phone (209) 533-2596 • Fax (209) 533-2412 • www.sonora-area.org • greg@sonora-area.org

Vision

The Sonora Area Foundation will be the benchmark for exemplary practices in the philanthropic field.

Mission

The Sonora Area Foundation strengthens its community by assisting donors, making grants and providing leadership.

Values

Be open to learning and listening.
Act with integrity.
Make courageous decisions.
Value our community and respond to its needs.
Lead by example.

Mailing: W.A.T.C.H. Resources, Inc.

Leadership Russell joins SAF board

Long-time Sonora resident and retired health care manager Tracy Russell has joined the Sonora Area Foundation Board of Directors.

Russell, who had a 25-year career with Kaiser Permanente in Oakland, serves on the boards of several civic groups and is an active supporter of many local charities and nonprofits. She said she is honored and excited to take this new role, and to bring new perspectives and connections to assist the Foundation's work.

"The Sonora Area Foundation is one of the very best organizations in Tuolumne County," Russell said, "and the more I learn, the more impressed I am.

"It's a real honor to be able to help make decisions that are so far reaching for all kinds of groups in our community."

Russell brings a broad business and health care background to her new post. She was in information services at Kaiser, and moved to Sonora with her husband, Hank, in 1998. She currently serves on the advisory boards for Sonora Regional Medical Center and Sierra Conservation Center, is a life member of

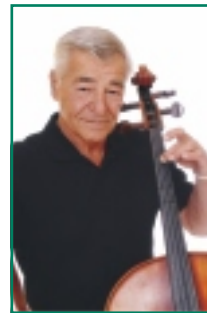
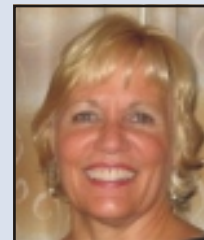
Omega Nu, houses actors for Sierra Repertory Theatre, is a long-time member of Tuolumne County Aquatics Master Swimmers and serves on the Sonora Parks, Recreation and Beautification Committee.

"I see my job at the Foundation is to be open, to listen and learn, ask questions and be clear on our goals," she said. "We're keeping the original intent of the Foundation intact – to see that our community thrives."

Russell replaces long-time director and Sonora attorney William J. Coffill, who had served on the Foundation board for over 18 years.

"Bill has played a significant role in guiding and directing the Foundation in its efforts to provide exemplary services to the community," said SAF President Jim Johnson. "We will all miss his thoughtful advice and input.

"At the same time, we welcome Tracy and look forward to the fresh perspective and experiences she brings to the organization. Our community is fortunate to have such capable and caring leaders willing to serve."



Leave your legacy

We can help you support your passions forever

Designate your favorite charity or area of interest in your will or trust and have the Foundation carry out your wishes. Your Professional Advisor or the Foundation can help you realize your lasting desires: helping children, protecting the environment, enriching the community or other charitable causes.

SONORA AREA FOUNDATION
(209) 533-2596

www.sonora-area.org • greg@sonora-area.org

Giving Donor-directed giving grows for local causes

After nearly 20 years of awarding community grants, the Sonora Area Foundation's work as a local funder is very well known in Tuolumne County.

Directors award over \$500,000 per year to local nonprofits and community projects through the Foundation's competitive grants. But those competitive grants are only a fraction of the Foundation's annual work.

The Foundation's staff also manages more than 170 funds established by local donors and organizations. Last year an additional \$650,000 was awarded for scholarships, grants and charitable causes.

This funded more than 250 grants and scholarships of all sizes. They provided major support for the ATCAA Food Bank and the Humane Society, helped purchase materials for the quilt-making work of the Comfort Project, helped Summerville High School's award-winning Academic Decathlon team travel to state finals, and provided scholarships for more than 100 local students.

"So many people aren't aware there is another whole side to our work," said SAF Executive Director Greg Applegate, "and it's actually larger than the Foundation's

competitive grant program."

Sometimes the grants are specifically designated by donor. At other times, the Foundation's staff is carrying out the wishes of an individual who left a bequest that established one of the funds. And sometimes, the Foundation simply asks a donor, who they know has an interest in a specific area, such as health or education, if they would like to support a particular project or act on a specific opportunity.

Assisting with donor-directed giving is tremendously rewarding, Applegate said, because he and Program Manager Lin Freer get to connect donors with the causes that are most meaningful to them. Whether that's fulfilling the intent of a donor who left a legacy fund or helping establish a scholarship in honor of a loved one, making that connection is powerful and positive.

"It's a remarkable part of the job," Applegate said. "And it runs the whole spectrum. Some donors like to stay under the radar and keep a very low profile, others are very active. And we also have several undesignated funds, where donors have left a legacy fund for the Foundation to manage for

the changing needs of the community.

"We can design our services to meet the needs of each individual."

Sonora attorney Bill Coffill is the advisor on a fund established by his late mother, Marjorie Coffill, and he appreciates the Foundation's services.

(Continued on page 3)



Graduates benefit from funding

Photo courtesy: Union Democrat

Community Donors launch fund for school health van

A group of donors working to build on-going support for Tuolumne County's "BOB" Health Van have launched a new fund at the Sonora Area Foundation.

A fundraising campaign to continue services kicks into high gear this summer, led by Tuolumne County Director of Public Health Dr. Todd Stolp and Superintendent of Schools Joe Silva.

"The van has been a lynch pin in providing health care services and health education to kids in our rural areas," Stolp said. "And it became even more critical as we responded to the



BOB Health Van and friends

recent outbreaks of the H1N1 flu virus and whooping cough."

Both outbreaks specifically threatened children, and county health officials were able to efficiently and effectively provide hundreds of immunizations very quickly.

The health van regularly serves every public school in the county, and last fiscal year alone provided health services to more than 700 school-age

children, health education presentations to nearly 400 students and vaccinations to more than 1,000.

Unfortunately state and federal funding for the van's services is now dwindling, Silva said, so he and his team must find local supporters to fill the gap. They made an encouraging start with an appeal earlier this year to local employers and a large gift last month from an interested donor.

Establishing a dedicated fund at the Foundation will help get community donors on board, said Silva. It gives the drive consistent visibility, lets supporters make tax deductible contributions to the health van at any time, and the Foundation provides its services at no cost.

To contribute to the BOB Health Van contact Sonora Area Foundation at 533-2596.

Donor Funds

ADVISED FUNDS

Acorns to Oaks Fund
 Bergsund Family Fund
 Boyd Family Fund
 CB Celebration Fund
 Comazzi Family Fund
 Donald A. and Elisabeth Weber Fund
 Farrell Family Fund
 Foothill Ministry Fund
 Front Porch Charitable Fund
 Geer Family Fund
 Gianelli Family Fund
 Grimes Family Fund
 Hohne Family Fund
 Irving J. Symons Trustees Fund
 Kevin Bates Fund
 Joe Martin Family Fund
 Julie Hulet Memorial Fund
 Kiwanis Club of Sonora Fund
 Marjorie L. Coffill Charitable Fund
 Norbert & Elaine Wilson Endowment Fund
 Ozbirn Family Fund
 Phil and Barbara Harvey Charitable Fund
 Priest Family Fund
 Robert and Kathy Boyer Fund
 Sierra Nevada Service Fund
 Todd and Cyndi Simonson Fund
 Tuolumne Angel Fund
 Tuolumne Sunrise Fund

DESIGNATED FUNDS

Barbara McClymont Fund – Student needs at Sonora School
 Betty Regelin Fund – Support A-TCAA Family Homeless Shelter
 Bill of Rights Fund – Bill of Rights education at Sonora Elementary School
 BOB Health Van – Support of BOB the Health Van
 Brizard Fund for South Side Seniors Inc. – Support programs and needs of the Gathering Place
 Calaveras Tennis Fund - Support Tennis in Calaveras County
 2011 Capitol Christmas Tree Fund – Support Capitol Christmas Tree Project
 Children's Holiday Party Fund – Programs for children in need in Tuolumne County
 Christmas Partners Fund – Support Christmas programs
 Comfort Project Fund – Quilts for children and elders in need
 Comfort Project Endowment Fund – A growing endowment for the Comfort Project
 Community Indicators Project Fund – Measurement and assessment of Tuolumne County
 Community Safety Net Fund for Tuolumne County – Support safety net programs in Tuolumne County
 Donald and Renee Paulsen Fund – Charitable purposes in City of Sonora
 Dorothy Daniels Memorial Fund – Endowment for Sonora United Methodist Church.
 Duende Drama & Literature Fund – Support programs and projects of Duende
 Dyllon Bonella Memorial Fund – Diminishment of cancer related suffering
 Elks Event Fund – Support qualified nonprofits' use of Sonora Elks Lodge
 Ernest Olivieri Fund: Elks Lodge 1587 – Support Elks Lodge Scholarship program
 Friends of the Children's Park Fund – Park maintenance and youth recreation
 George James Memorial Education Fund – TuCARE fund for teacher education in natural resources



Quilting sisters (from left) Katey Barbee, Flo Daley and Judy Fitzmorris in their Comfort Project workroom

Grace, Bob & Ellena Cutler Fund – Support spay and neutering programs for controlling pet populations
 Graser-Knudson Memorial Fund – Endowment for Twain Harte recreational purposes
 Hope of the Nations Fund – Educational supplies for Tanzanian children
 Kiwanis Childsprees – Back-to-school shopping spree fund for children in need
 Leadership Tuolumne County Fund – Support the Leadership Tuolumne County program
 Lucille Arnold Fund – Provide success for youth at risk
 Marjorie L. Coffill Local History Fund – Tuolumne County Library materials on Mother Lode history
 Mary Jo Brereton Fund – Program support for Omega Nu
 Miller Endowed Fund: Elks Lodge 1587 – Support Elks Lodge Scholarship program
 Minnie Wind Wolfinbarger Fund – Support special education and ROP Nursing at Sonora High School
 Mrs. Pringle Music Fund – Classical music appreciation for any K-8 school in Tuolumne County
 Smile Keepers Fund – Support dental needs of the underserved in Tuolumne County
 South Tuolumne County Museum Library Fund – Maintenance of the Groveland museum-library
 Stage 3 Theatre Company Fund – Support programs and projects of Stage 3
 SOS/Safety Net Fund for Tuolumne County - Support Safety Net programs in Tuolumne County
 Tuolumne County Juvenile Judges Fund – Needs of Tuolumne County youth referred by justices
 Tuolumne County Tennis Court Restoration Fund – Restoration of tennis courts
 Twain Harte Skate Park Fund – Skate park maintenance
 Vial for Life Fund – Support Vial for Life project
 William and Mary Crook Fund – Support of the Alano Club
 YES Partnership Fund – Support of the YES Partnership coalition

FIELD OF INTEREST FUNDS

Elinor F. Brown Endowment Fund – Endowed fund for Tuolumne County educational purposes
 J.R. Christensen Family Fund – Nursing and health education in Tuolumne County
 Jim and Louise Angelo Family Fund – Endowment for Tuolumne County schools

Dawn's Light Fund
 Economic Development Co. of Tuolumne County Fund
 Friends of Tuolumne County Library Fund
 Hospice of the Sierras Fund
 Humane Society of Tuolumne County Fund
 Infant-Child Enrichment Services Fund
 Meals on Wheels Fund
 Northern Mariposa County History Center Fund
 Rose Wolf Wildlife Rescue and Rehabilitation Fund
 Salvation Army of Tuolumne County Fund
 Sierra Foothills Residential Care Fund
 Senior Resource Services Fund
 Sierra NonProfit Support Center Fund
 Sierra Repertory Theatre Fund
 Southside Senior Services Fund
 Summerville High Foundation Endowment Fund
 Support Sonora School Endowment Fund
 Support Sonora School Fund
 WATCH Endowment Fund

UNRESTRICTED FUNDS

Cunningham Family Fund
 Geiger Fund
 Homer Latimer Fund
 Martha Barnes Tuolumne County Betterment Fund
 Nikki & John Karpinski Fund
 Sonora Area Foundation Futures Fund
 Toni Gibson Fund

SUPPORTING ORGANIZATIONS

Irving J. Symons Foundation for Tuolumne County
 Symons Family Fund

SCHOLARSHIP FUNDS

Aaron Baker Memorial Scholarship – Sonora High: athletics
 Andy Fredericks Memorial Scholarship – Fire fighting programs and scholarships
 Aronos William Morris Scholarship – Tuolumne County high schools
 Aronos Women's Research Club Scholarship – Columbia College attendee
 Barbara Sardella Memorial Scholarship – Sonora High: Sonora Elementary graduates
 Bill Gerber Memorial Scholarship – Summerville High: athletics

Local Emergency Services

Support Fund – Disaster prevention and recovery
 Robert C. Jones Fund – Advocacy for those who experience discrimination
 Tuolumne County Eye Care Fund – Eye care needs in Tuolumne County
 Tuolumne Tennis Association Fund – Improve tennis in Tuolumne County
 Wings Fund – Expenses for the non-medical care of ill children
 Youth Sports Foundation Fund – Tuolumne County youth sports facilities

AGENCY DESIGNATED FUNDS

ATCAA Family Literacy Fund
 Calaveras Heritage Council Fund
 Central Sierra Arts Council Fund

Bret Laws Memorial Scholarship – Columbia College: fire science
 Brockman Family Scholarship – Sonora High: education
 Bruce Paxton Memorial Scholarship – Tuolumne County high schools: music
 Class of 1946 Scholarship – Sonora High: academics
 David Paul Grant Memorial Scholarship – Tuolumne County high schools: law enforcement – EMT-fire science
 Doc Curtice Memorial Scholarship – Sonora High: academics
 Dr. Gaylon & Barbara Smith Scholarship – Sonora High: academics
 Earl and Mary Purdy Memorial Scholarship – Sonora High: music or physical education
 Elaine Symons Baker Scholarship – Sonora High: academics
 Eva Schicke Memorial Scholarship – Nursing or fire science
 Firefighter Michael Chad Harris Scholarship – Columbia College & Napa College: fire technology
 Frank Salel Youth Fund – Benefit Tuolumne County youth
 Front Porch Scholarship – Tuolumne County High Schools: math, engineering, computer science
 Futures Forward Scholarship – Foster Care students
 Gardella College Fund – Sonora High: interest in local government or politics
 Harry A. Riedinger Memorial Scholarship – Sonora High: academics
 Harvey H. Uhl Scholarship – Sonora High: Trade schools or higher education
 Highland Oaks Agricultural Scholarship – Summerville High: agriculture and natural resources
 Homer Latimer Scholarship – Sonora High and Summerville High: academics
 Jeff Sanders Memorial Scholarship – Bret Harte High: academics
 Jeff Vassallo Memorial Scholarship – Summerville High: Friday Night Live
 Jennie Evans Memorial Scholarship – Tuolumne County high schools: business
 Jerry Ryder Scholarship – Tuolumne County high schools: Korean War Veterans' relatives
 Jessica Elizabeth Jager Memorial Scholarship – Sonora High: academics
 Joe Martin Family Scholarship – Sonora High: natural resources
 John E. Kelley Memorial Scholarship – Mother Lode Round-Up Queen
 Kathleen Calestini Memorial Scholarship – Tuolumne County high schools: Sonora Elementary graduate
 Kristi Francis Memorial Scholarship – Sonora High: academics
 Larry and Virginia Reed Twain Harte Rotary Scholarship – Summerville High: vocational
 Lil Dawson, Winifred Black, Big Oak Rebekah Lodge # 259 Scholarship – Tuolumne County high schools: academics
 Lyle R. Scott Scholarship – Vocations/trades education
 Lynn Gates Nursing Scholarship – Columbia College: nursing
 Martha Barnes Scholarship – Summerville High: females, non-traditional fields
 Martin and Bethel Liljedahl Scholarship – Sonora High: agriculture
 M.L. Interagency Training Officers Scholarship/Bass Family Fire Fighters' Memorial Scholarship – Tuolumne and Calaveras high schools: public safety
 Mother Lode Stanford Club Scholarship – Tuolumne County high schools: Stanford University attendee
 Mt. Springs Women's Golf Scholarship – Scholarships for women in golf
 Myers Family Fund – Tioga High: vocational education
 Pearl Segerstrom Memorial Scholarship – Sonora High: academics

Scholarship Nursing friends honor a mentor

When Jeri Lawler met her friend Lynn Gates in nursing school in Sacramento more than a decade ago, they were both making new beginnings.

Lawler was a single mom on welfare, struggling to stay in school so she could have a better future for herself and her family.

Gates was back in college in her late 40s, heading straight into graduate school for nursing administration. She had ambitious career goals herself and a generous spirit for encouraging younger colleagues to aim for their dreams.

"She just took me under her wing and was such an inspiration," Lawler said. "I was shy and reserved – and she kept encouraging me to keep going with my training and education."

"There are a lot of nurses in this county who were inspired by her. She would see some-thing in you and not let go."



Lawler and Gates became fast friends and later co-workers, when Gates recruited Lawler to take a job at Sonora Regional Medical Center. So when Gates died suddenly after suffering a massive stroke, Lawler, now a family nurse practitioner, was determined to pay a meaningful tribute.

With Gates' family, she has launched the Lynn Gates Nursing Scholarship at the Sonora Area Foundation, and will make their first three \$500 awards this summer.

"In the spirit of Lynn, you declare it and make it so," Lawler said with a laugh. She organized a cooking class and dinner party at Columbia's Yankee Hill Winery to raise the funds, and intends to make it an annual event.

"Lynn was always there for us, she was so inspiring," Lawler said. "She was an elegant and down-to-earth lady – and what I really learned from her is you don't get if you don't ask."

The next benefit on June 24 will fund next year's scholarships for graduating high school seniors and continuing nursing students.

Pecchinino/Sylva Scholarship – Sonora High: academics
 Perricone-Hobbin-Hodge Scholarship – Tuolumne County high schools: University of California
 Ralph and Dotte Francis Memorial Scholarship – Sonora High: athletics
 Rockwood Scholarship – Sonora High: art
 Ross Jones Memorial Scholarship – Tuolumne County high schools: fire sciences or law enforcement
 Sgt. Bobby Rapp Ski Scholarship – Official Ski Race Team
 Shaws Flat Scholarship – Sonora High: academics and vocational
 Sierra Music Scholarship – Tuolumne County student: classical music lessons
 Sierra Quilt Guild Scholarship – Tuolumne County high schools: academics
 Sonora Lions Varvandakis Scholarship – Sonora High male: academics
 Stephen H. Manson Scholarship – Sonora High: art and nursing
 Teresa Mary Thors Scholarship – Secondary education for disabled students
 Terry Campbell Loshalegro Award – Summerville High: academics
 Tuolumne County Community Tennis Scholarship – High school students involved in tennis or the arts
 Tuolumne County Farm Bureau Scholarship – Tuolumne County high schools: agriculture industry
 Tuolumne County Sheriff's Posse Scholarship – Tuolumne County students: agriculture or related field
 Tuolumne County Women's Network Scholarship – Women's education
 Tuolumne Sunrise Scholarship – Summerville High: academics

Twain Harte Chamber of Commerce Scholarship – Summerville High or Mother Lode Christian
 Vicki White PEO Memorial Scholarship – Sonora High Alternative Ed.: vocational/trade, college or university education
 Wally Berry Memorial Scholarship – Sonora High: academics
 Wes and Ruth Wyllie Memorial Art Scholarship – Summerville or Sonora High: art
 Wilma Lindberg Memorial Scholarship – Summerville or Sonora High: elementary teaching

Donor-directed giving grows

(Continued from page 1)

"It works so well," said Coffill, a former Foundation director. "For example, Lin just contacted me about supporting the Visiting Hospitalized Veterans group. That's a fine organization, it's a pleasure to support them, and I feel it's particularly appropriate since my mother worked with hospitalized veterans when she was with the Red Cross in World War II.

"When Lin calls, it's so easy to support them. I know their application has been vetted by the Foundation – and all it takes is an email."